



INSTALLATION AND OPERATION MANUAL

CNFE1(M,S)(1,2)(A,B)/(X)

10/100 MBPS ETHERNET ELECTRICAL ↔ OPTICAL
MEDIA CONVERTER FOR INTERNAL MOUNTING

The CNFE1(M,S)(1,2)(A,B)/(X) Ethernet internal mounted media converters are designed to transmit and receive 10/100 Mbps data over multimode or single mode optical fiber. The electrical interface will Auto-Negotiate to a 10 Mbps, or 100 Mbps Ethernet rate without any adjustments. The optical interface operates at a 100 Mbps Ethernet rate. These media converters are environmentally hardened to operate in extreme temperatures. LED indicators are provided for rapidly ascertaining equipment operating status. The CNFE1/X do not have a metal enclosure and are designed to be incorporated within a device.

See **Figures 1 – 3** for complete installation details. **Figure A** on **Page 3**, and the associated text, details mounting instructions.

FIGURE 1 – TOP VIEW - 1 FIBER

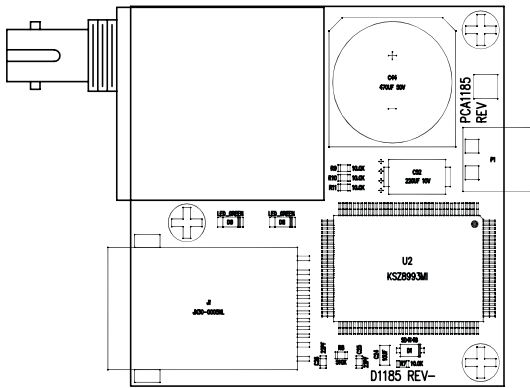


FIGURE 2 – TOP VIEW - 2 FIBER

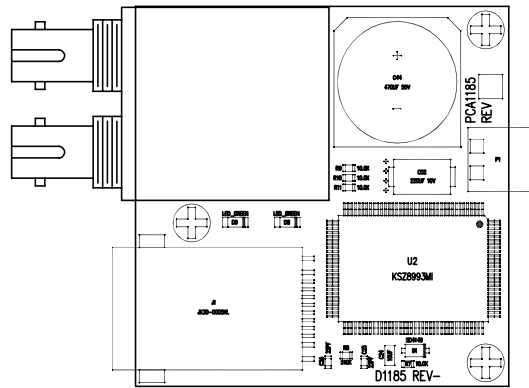


FIGURE 3 – SIDE VIEW

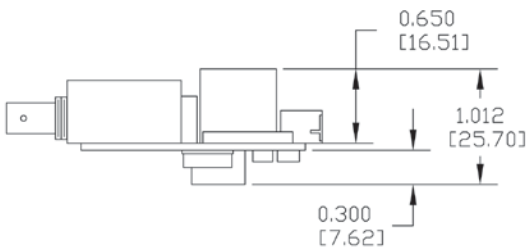
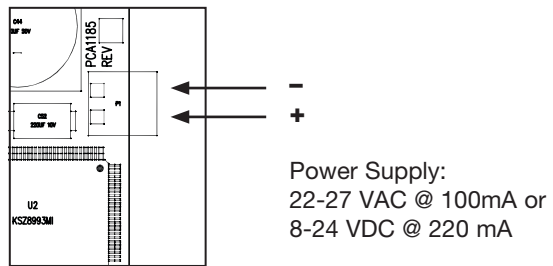


FIGURE 4 – POWER CONNECTIONS



OPTICS ARE SHOWN FOR BOARD ORIENTATION ONLY. ACTUAL OPTIC WILL VARY DEPENDING ON SPECIFIC PRODUCT ORDERED.

WARNING: Unit is to be used with a Listed Class 2 power supply rated 22-27 VAC @ 100mA or 8-24 VDC @ 220 mA.

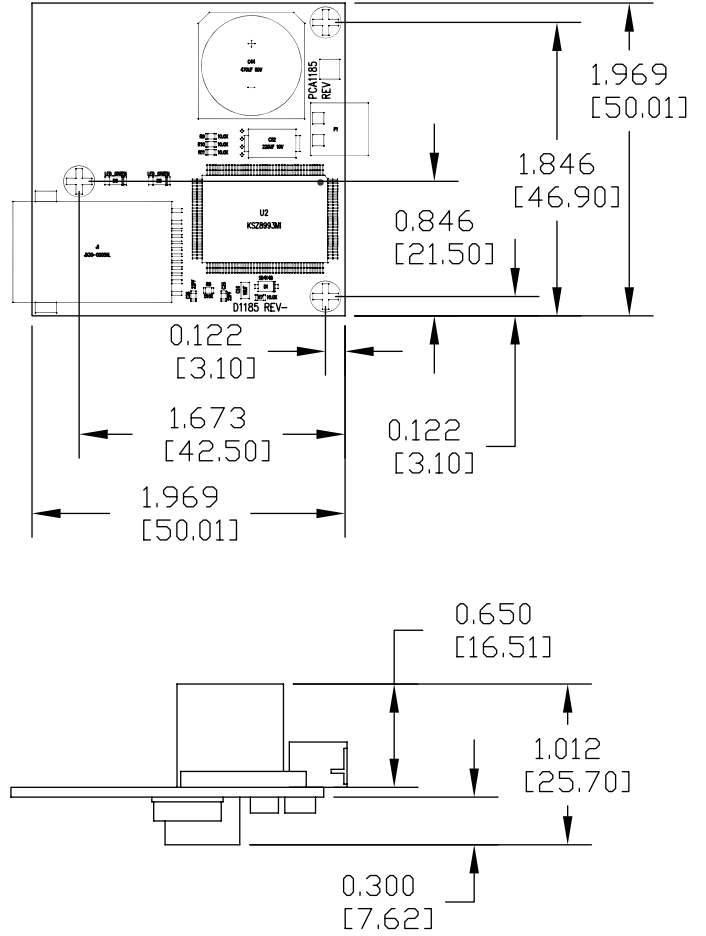
IMPORTANT SAFEGUARDS:

A) Elevated Operating Ambient - If installed in a closed or multi-unit rack assembly, the operating ambient temperature of the rack environment may be greater than room ambient. Therefore, consideration should be given to installing the equipment in an environment compatible with the maximum ambient temperature (Tma) specified by the manufacturer.

B) Reduced Air Flow - Installation of the equipment in a rack should be such that the amount of air flow required for safe operation of the equipment is not compromised.

The mounting holes are sized for a 2.5mm screw. Use an 8mm minimum long standoff for mounting.

FIGURE A – DIMENSIONS



3 CORPORATE DRIVE | DANBURY, CT 06810 | USA
 T: 203.796.5300 | F: 203.796.5303 | TECH SUPPORT: 1.888.678.9427 | INFO@COMNET.NET

8 TURNBERRY PARK ROAD | GILDERSOME | MORLEY | LEEDS, UK LS27 7LE
 T: +44 (0)113 307 6400 | F: +44 (0)113 253 7462 | INFO-EUROPE@COMNET.NET