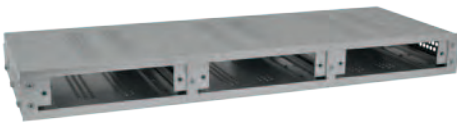


INSTALLATION AND OPERATION MANUAL



C3

1 RU HIGH 3 UNIT CARD CAGE WITH POWER SUPPLY

The C3 is a 1 RU (1.75") high 19-inch rack-mountable card cage unit capable of mounting up to three ComNet ComFit 1.0-inch wide modules.

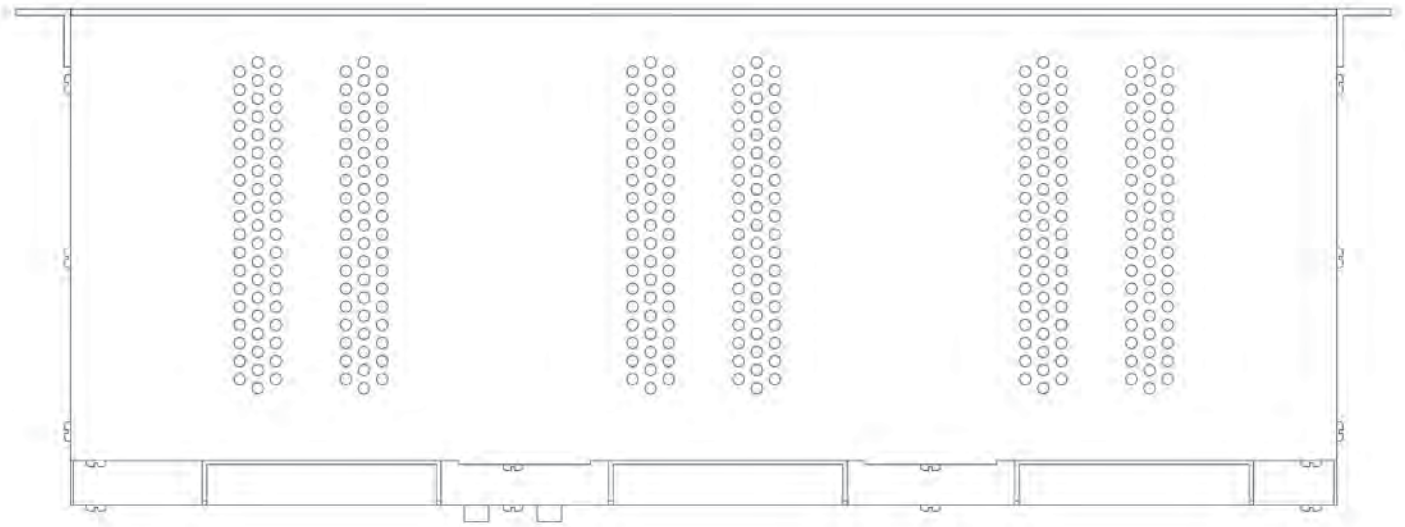
The C3 is provided with one external 120-240 VAC power supply with a 12VDC at 2A output, and includes reverse polarity protection. Two separate isolated DC inputs are provided for mission critical/high reliability applications where power supply redundancy is required. ComNet ComFit PoE (Power over Ethernet) modules may also be used, by replacing the power supply with a +48VDC unit, and connecting the supply output to the DC power input of each PoE module. See **Page 3** for wiring instructions.

Any module may be hot-swapped without any impact to the operation of the other modules within the card cage.

Ideally suited to those applications where rack space may be limited, the C3 may be used in desk-top installations by the addition of user-installed rubber feet on the bottom of the cage. It may also be installed as a rack by use of the two included rack-mount adapter brackets. See **Page 4** for installation instructions.

FIGURE 1 - C3 CARD CAGE

TOP COVER



REAR PANEL



FRONT PANEL

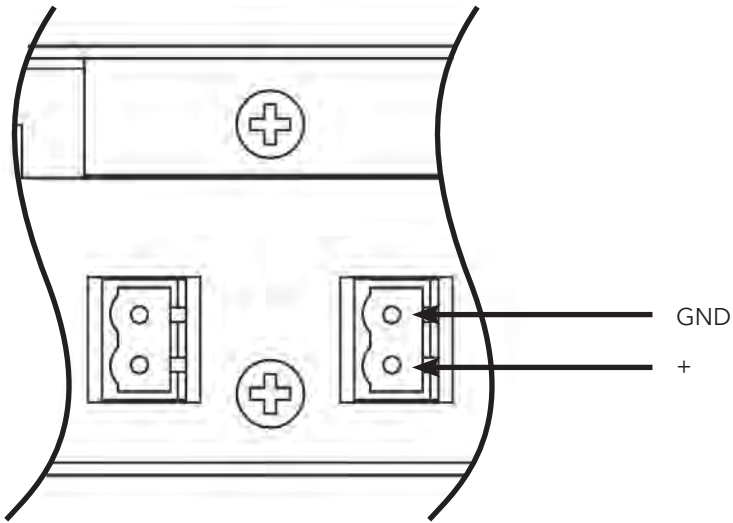


Optional Rack Mount Adapter Bracket Kit (Included)

Optional Rubber Feet (Included)

FIGURE 2 - C3 WIRING INSTRUCTIONS

REAR PANEL - REDUNDANT POWER SUPPLY CONNECTORS



Redundant Power Supply Connectors are located on the rear panel of the C3 Rack.

The lower pin on connector A and connector B is connected to the positive lead from the power supply. The upper pin is connected to ground.

Most power supplies feature a legend that denotes the polarity of the supply wires. Please confirm each wire's polarity through that legend before connecting to C3 rack.

INCLUDED PSU ELECTRICAL SPECIFICATIONS

Input Voltage: 90-264 VAC @ 70 W Maximum

Output Voltage: 12 VDC @ 2.0 Amps @ 75°C

MECHANICAL INSTALLATION INSTRUCTIONS

INSTALLATION CONSIDERATIONS

This product is supplied as a standalone or rack mountable unit. Units should be installed in dry locations protected from extremes of temperature and humidity.

CAUTION: Before installing, be sure that the power supply is turned off and that the rack power supply is disconnected from any power source.

IMPORTANT SAFEGUARDS:

- A) Elevated Operating Ambient** - If installed in a closed or multi-unit rack assembly, the operating ambient temperature of the rack environment may be greater than room ambient. Therefore, consideration should be given to installing the equipment in an environment compatible with the maximum ambient temperature (T_{ma}) specified by the manufacturer.
- B) Reduced Air Flow** - Installation of the equipment in a rack should be such that the amount of air flow required for safe operation of the equipment is not compromised.



comnet
Communication Networks

3 CORPORATE DRIVE | DANBURY, CT 06810 | USA
T: 83.796.5300 | F: 83.796.5303 | TECH SUPPORT: 1.888.678.9427 | INFO@COMNET.NET
8 TURNBERRY PARK ROAD | GILDERSOME | MORLEY | LEEDS, UK LS27 7LE
T: +44 (0)113 307 6400 | F: +44 (0)113 253 7462 | INFO-EUROPE@COMNET.NET